



BC Marine Parks Forever Society

Stern Tie Project

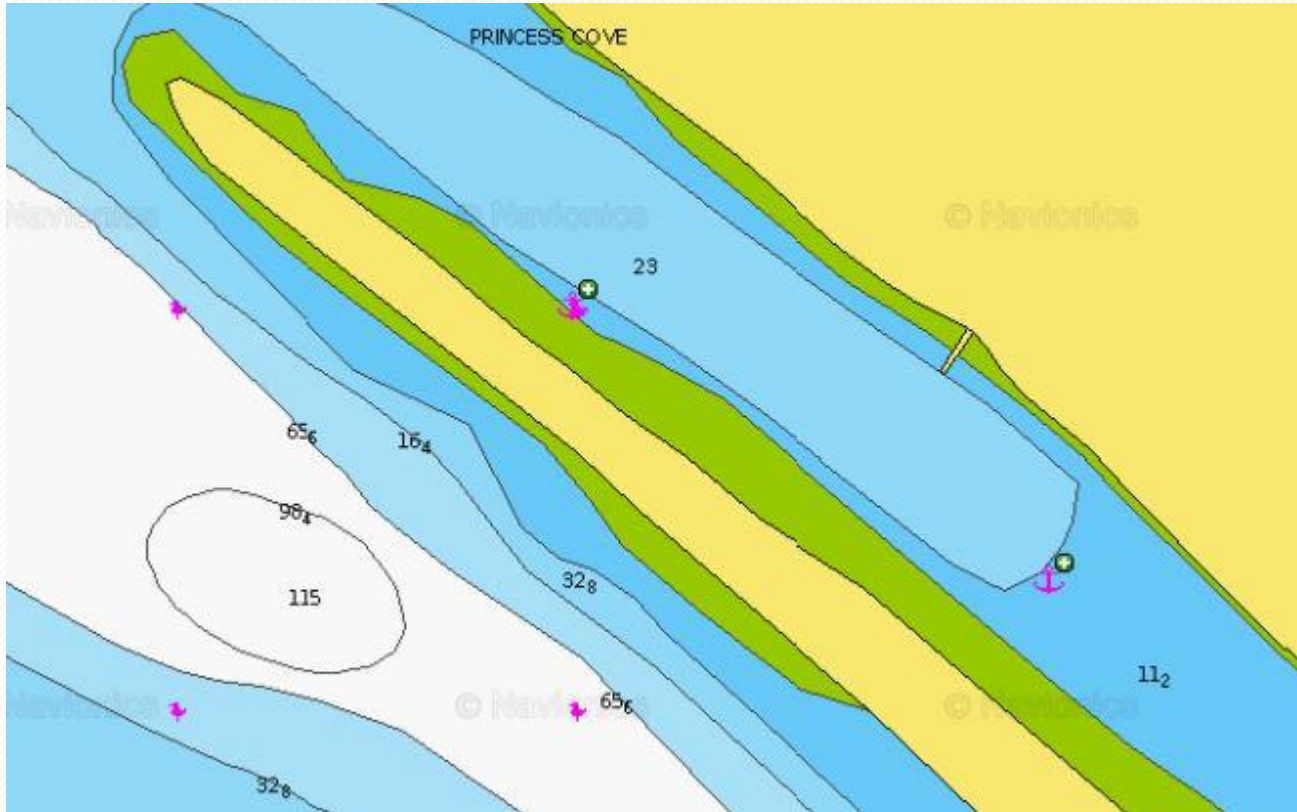


186 pins, chains and ID plates

- All materials supplied by ;
 - BC Marine Parks Forever Society
 - Installation costs shared with BC Parks
- Contractors: Proficiency Diving – Powell River BC
 - K2 Parks – Galiano I. BC
- Help us continue to improve your boating pleasure

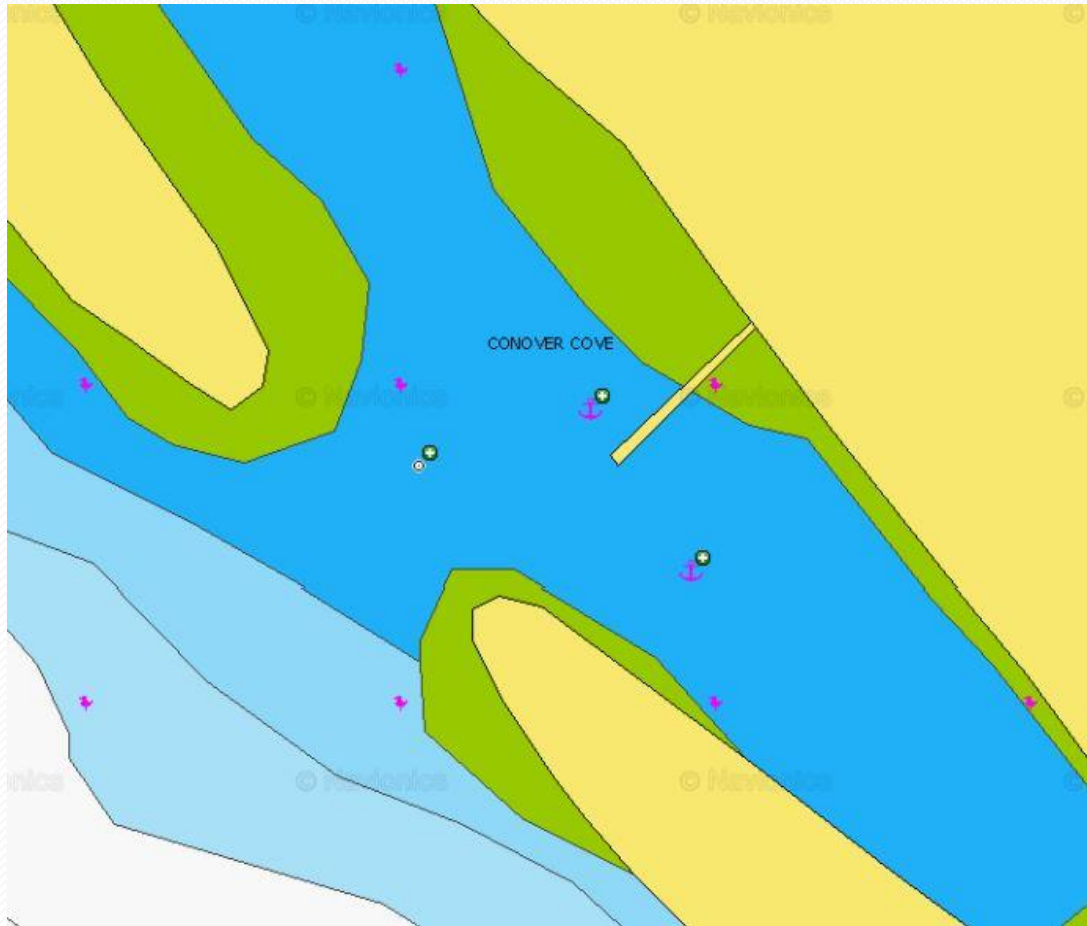
Visit www.marineparksforever.ca to donate

Princess Cove – Wallace Island



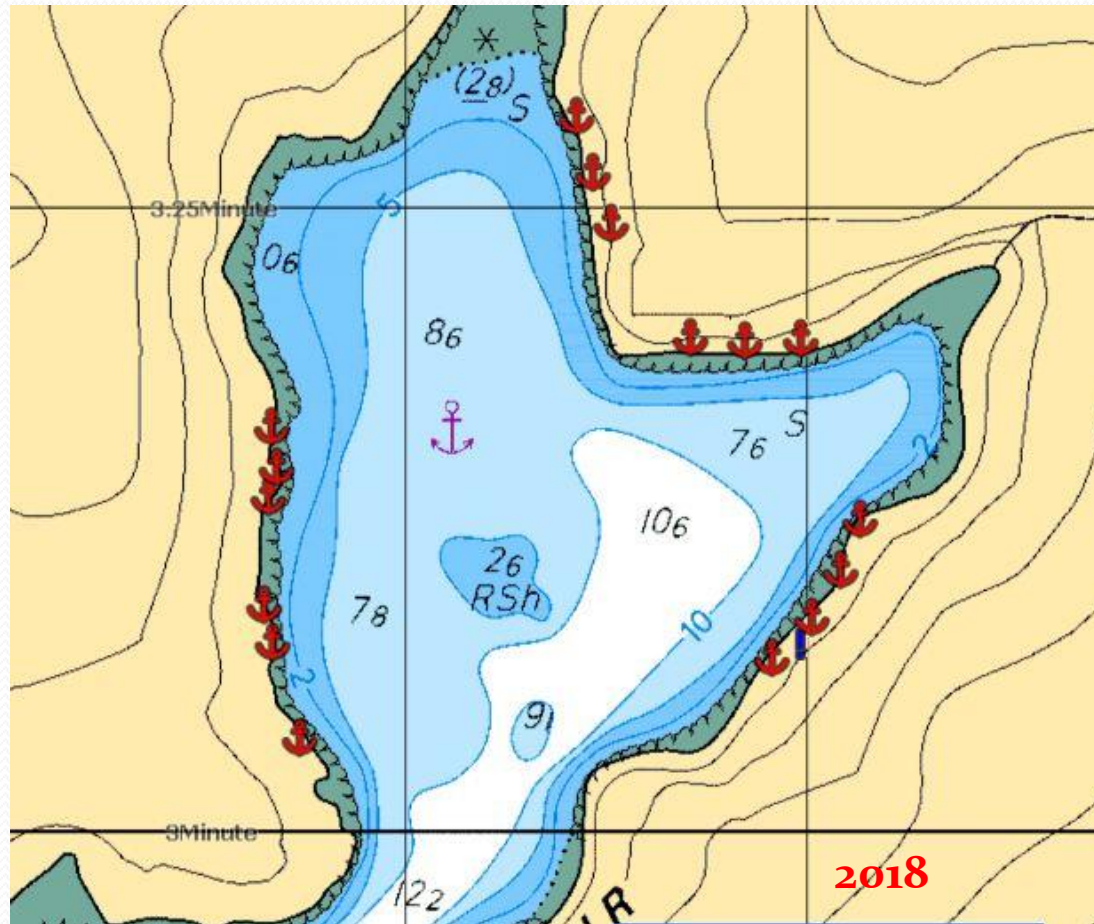
18 Long Link chains added to existing rock pins - 2015

Conover Cove – Wallace Island

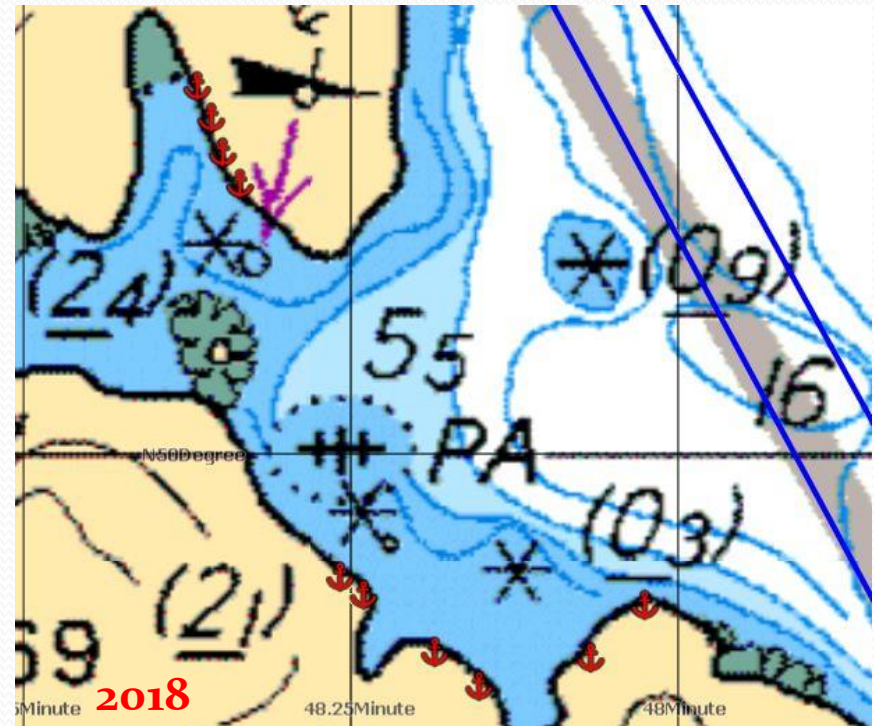
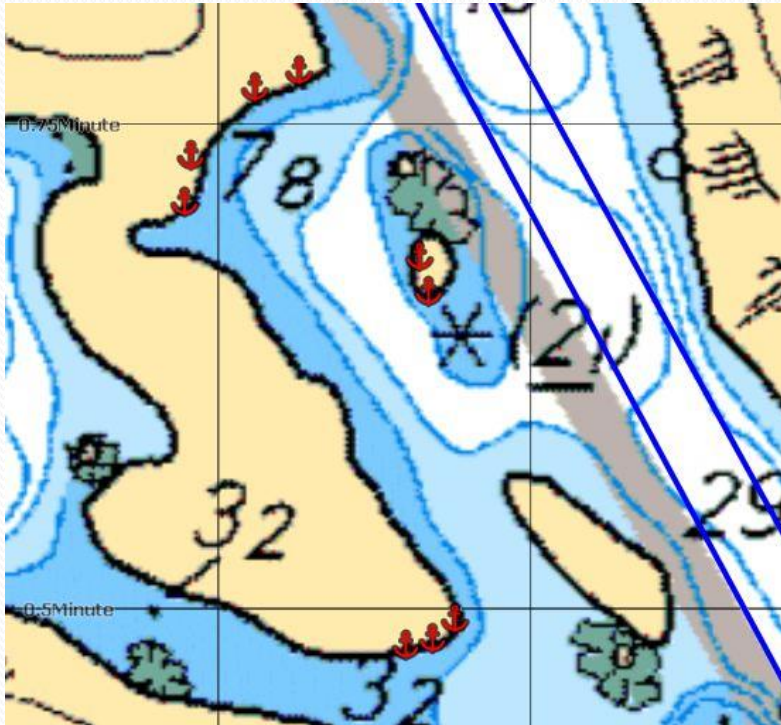


3 new pins, chains and ID plates - 2015

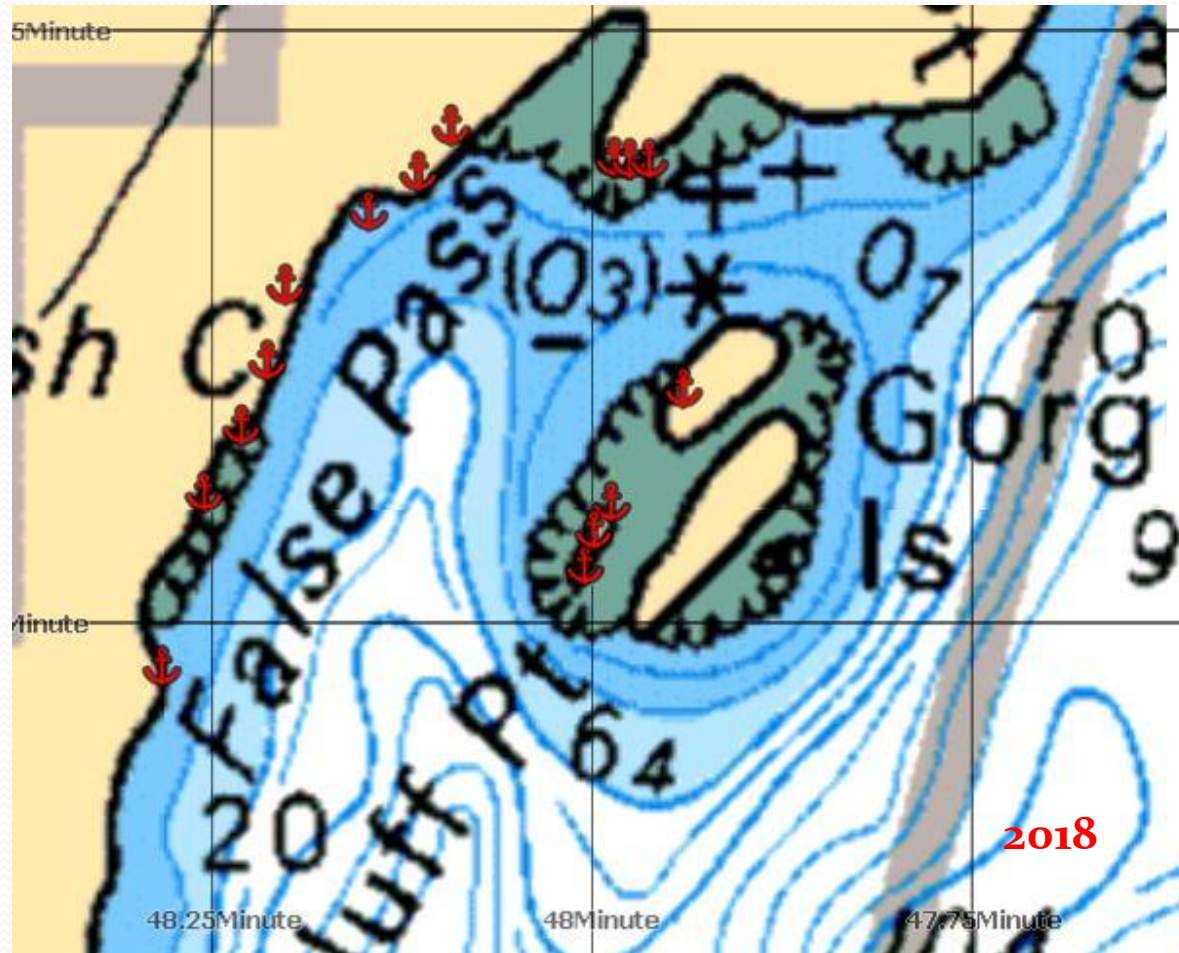
Grace Harbour Marine Park - 16



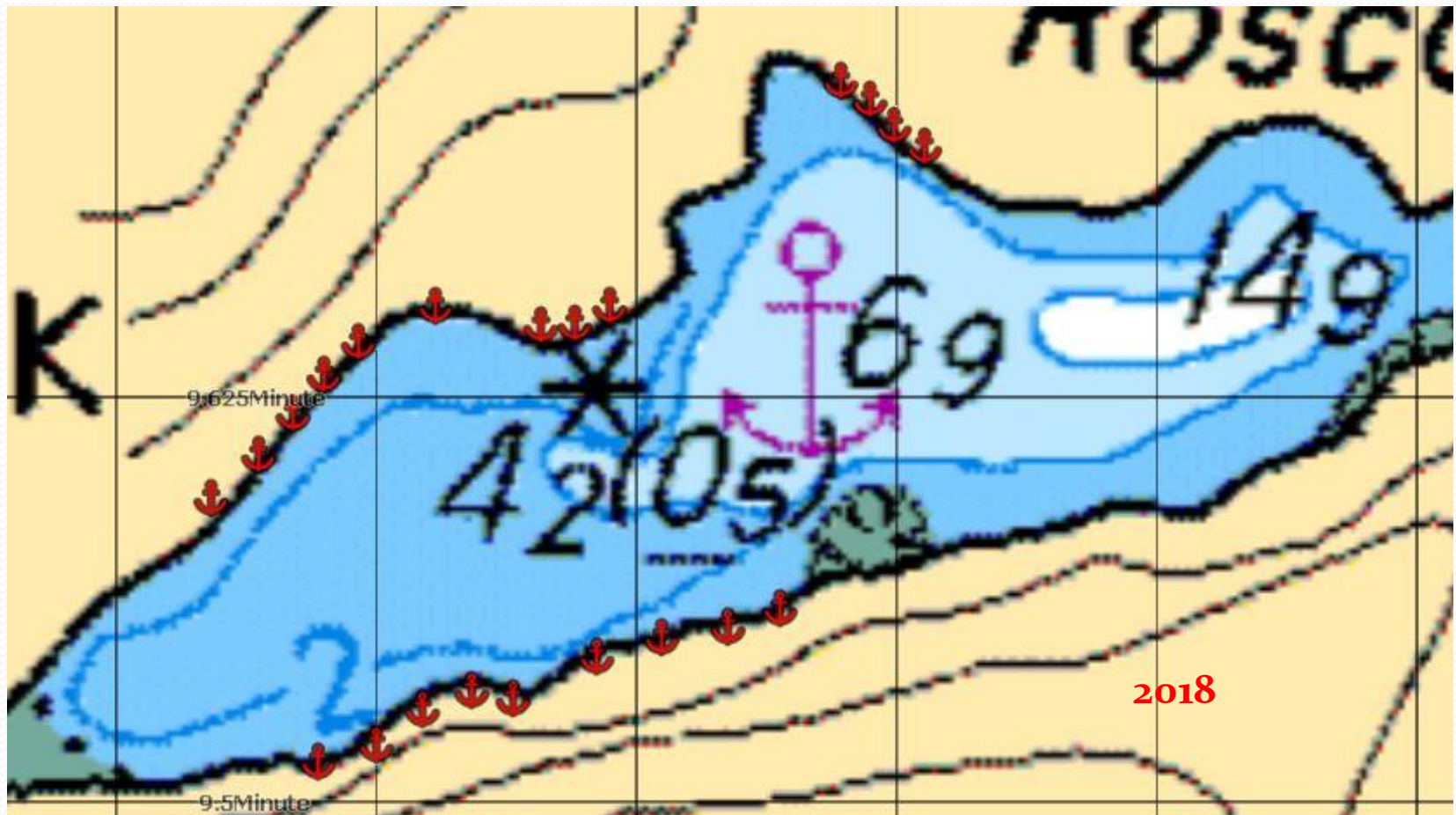
Copeland Islands - 19



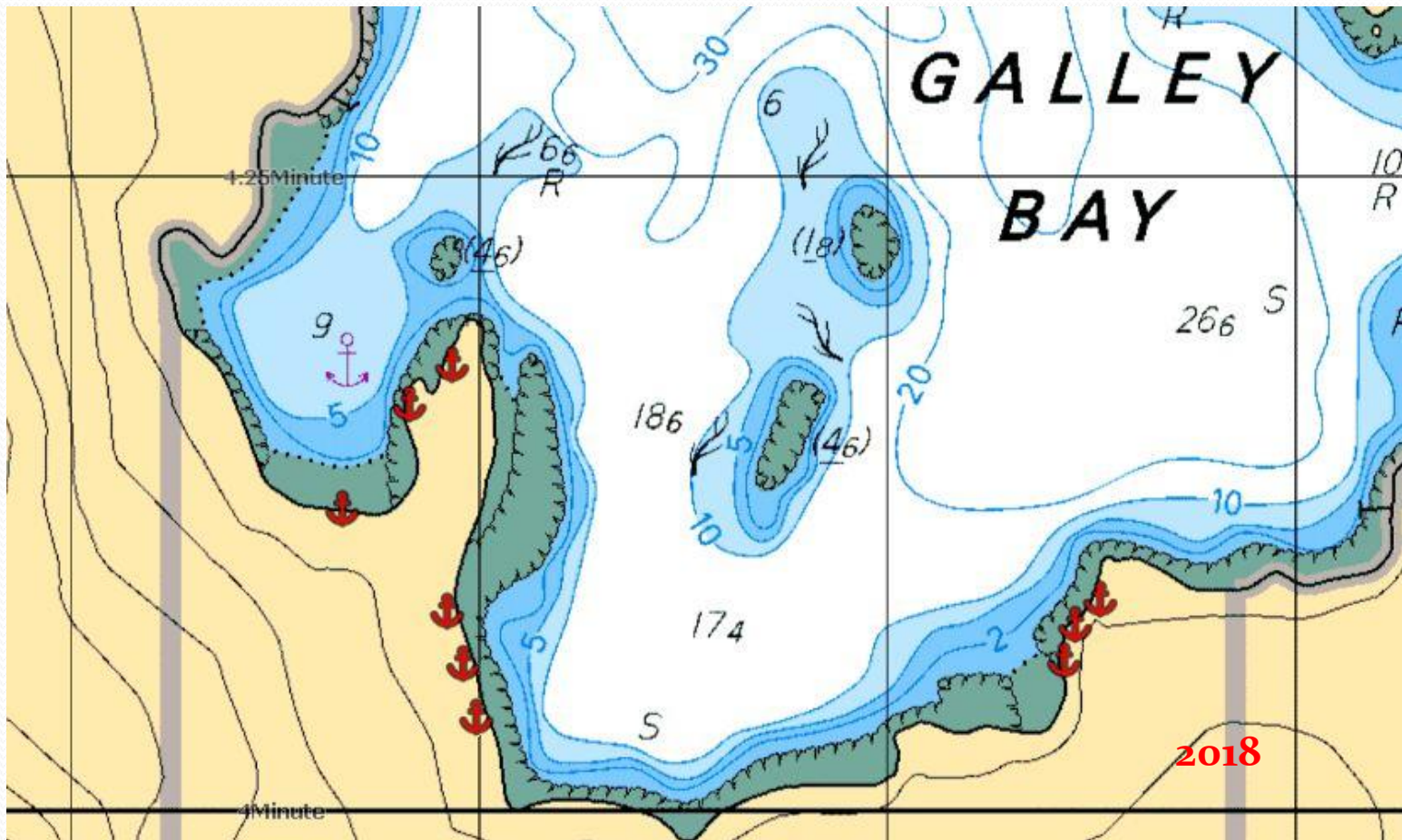
Walsh Cove Marine Park - 15



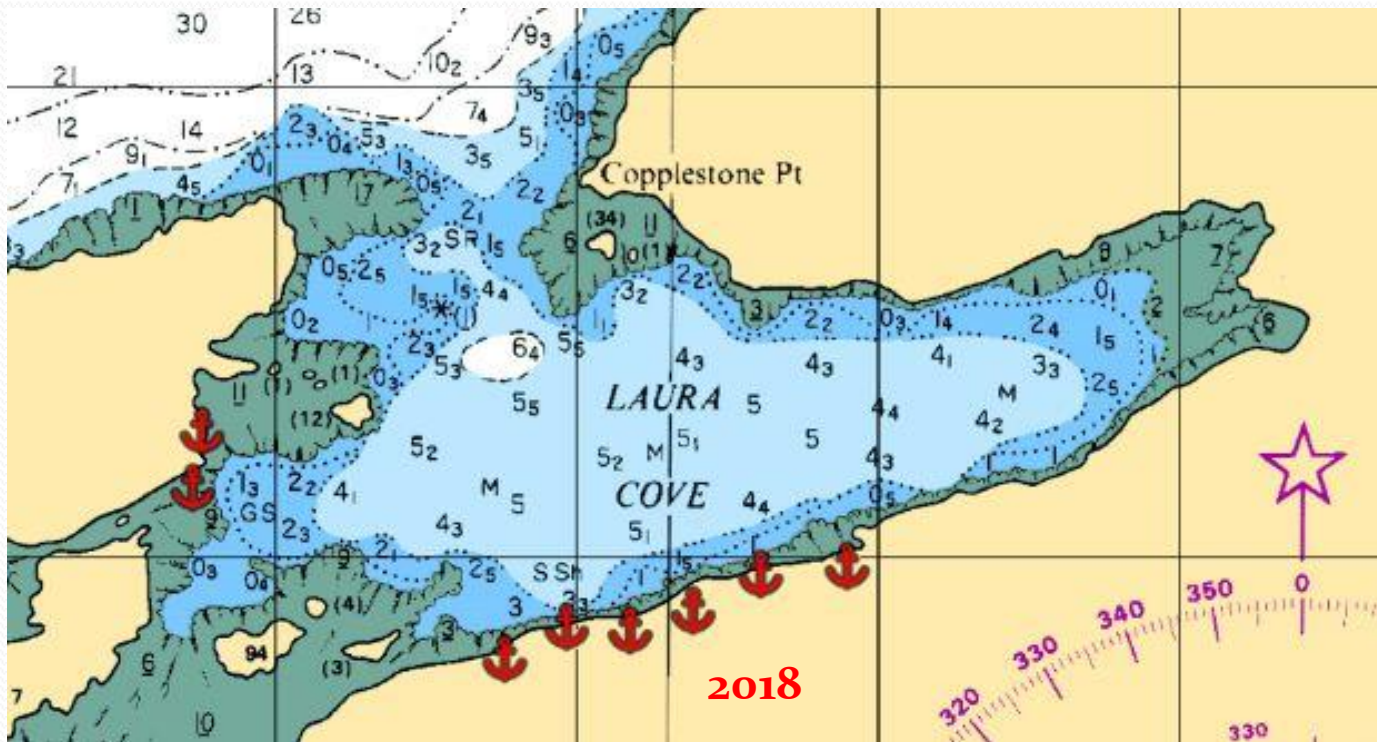
Roscoe Bay Marine Park - 22



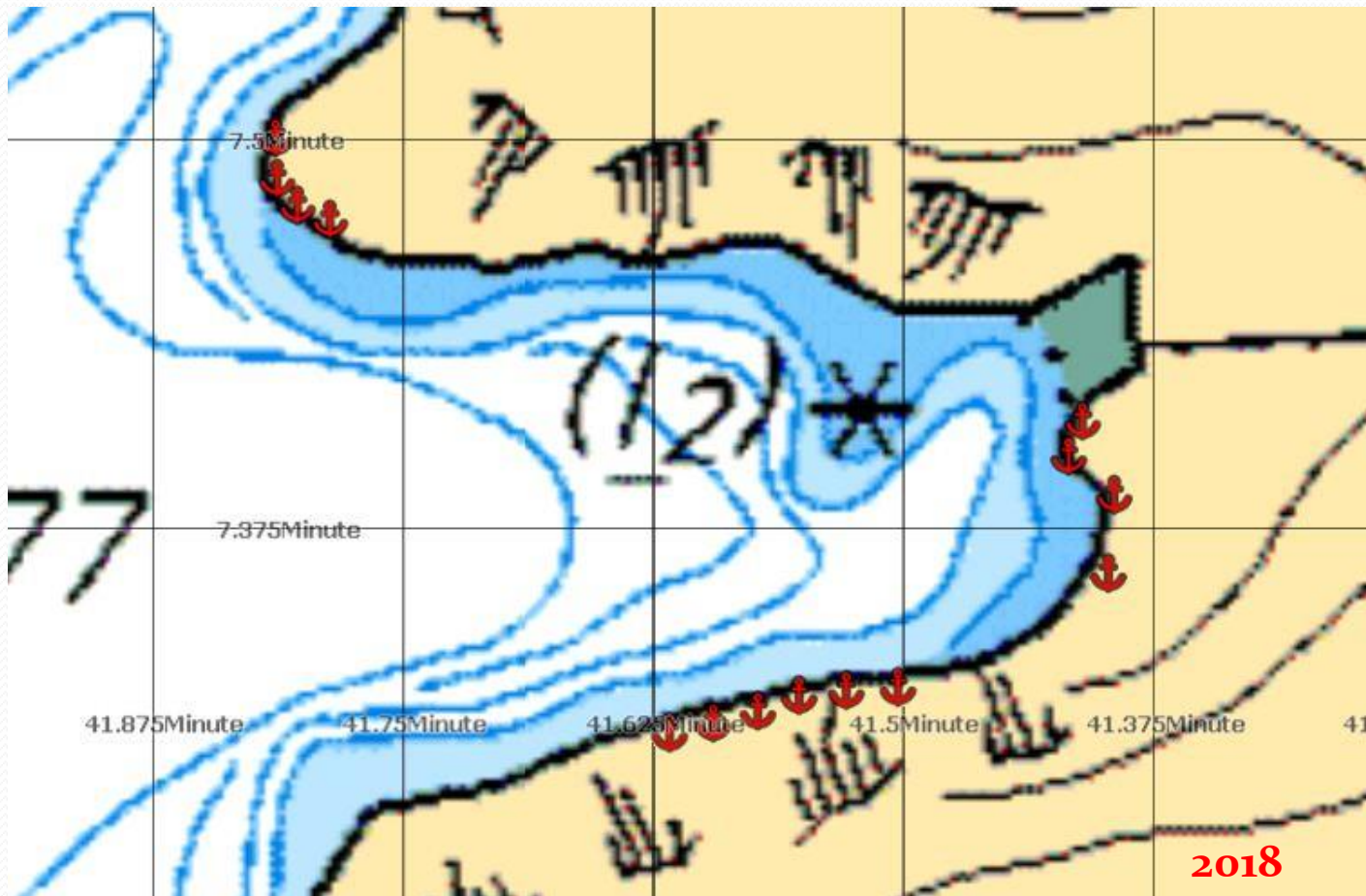
Galley Bay - 9



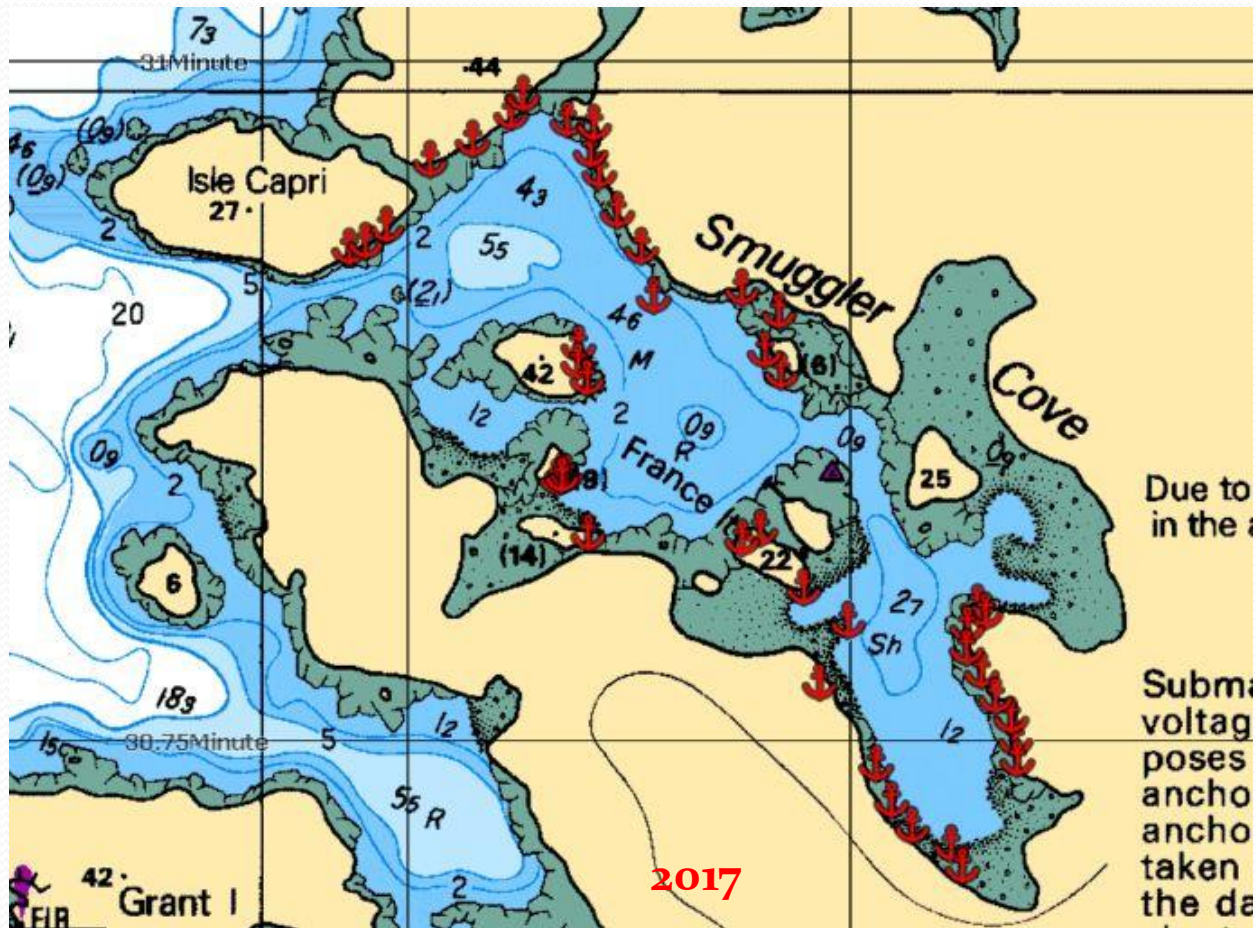
Laura Cove - 8



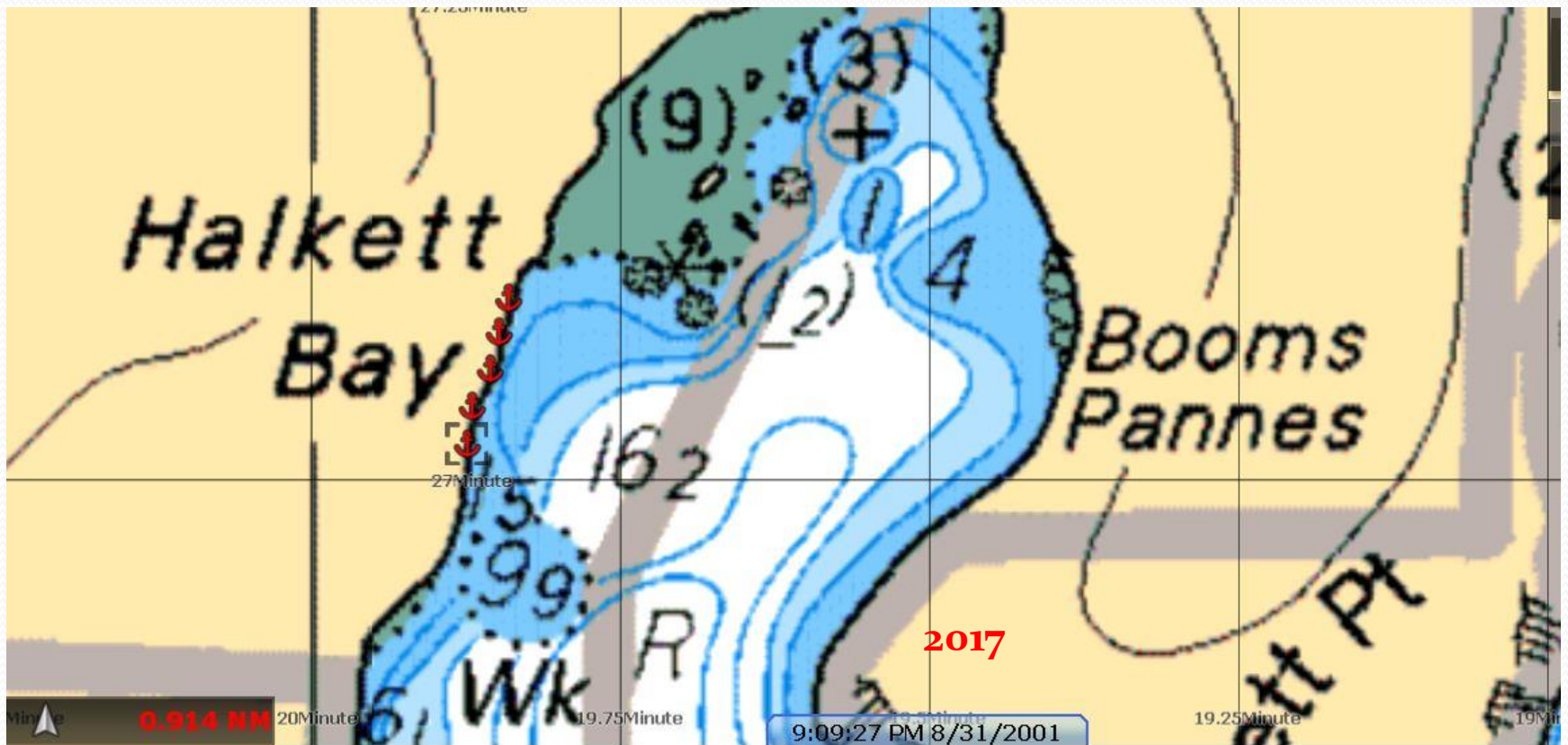
Tenedos Bay - 14



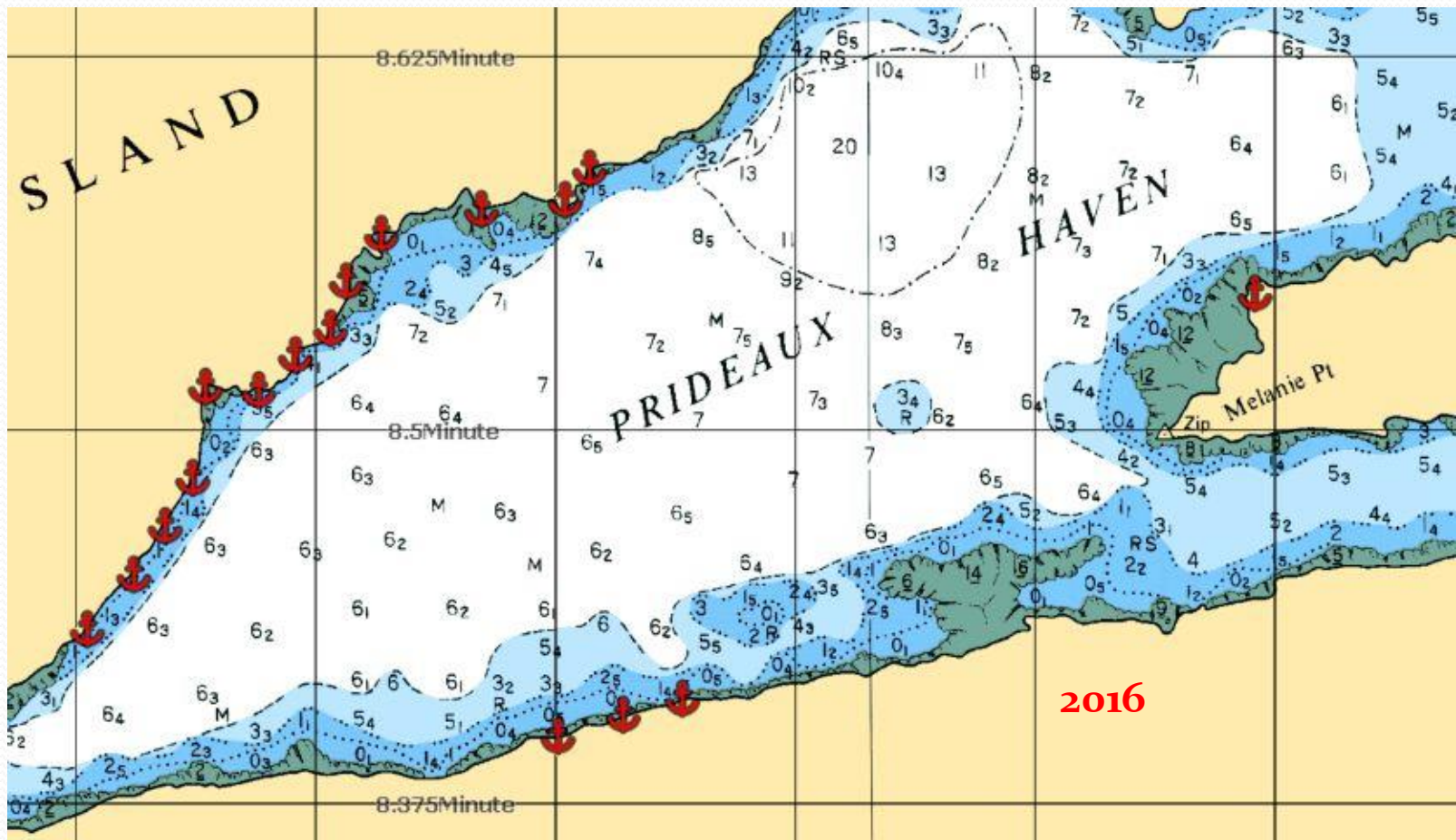
Smugglers Cove – 38 (new + updated)



Halkett Bay - 5



Prideaux Haven - 17



Scobell Isl. - 3

Scobell Island segment



All 3 planned ties were successfully installed. As predicted on the provided mapping, the middle tie(24) was not easily accessible and had to be relocated few meters south west.

Melanie Cove - 17

